

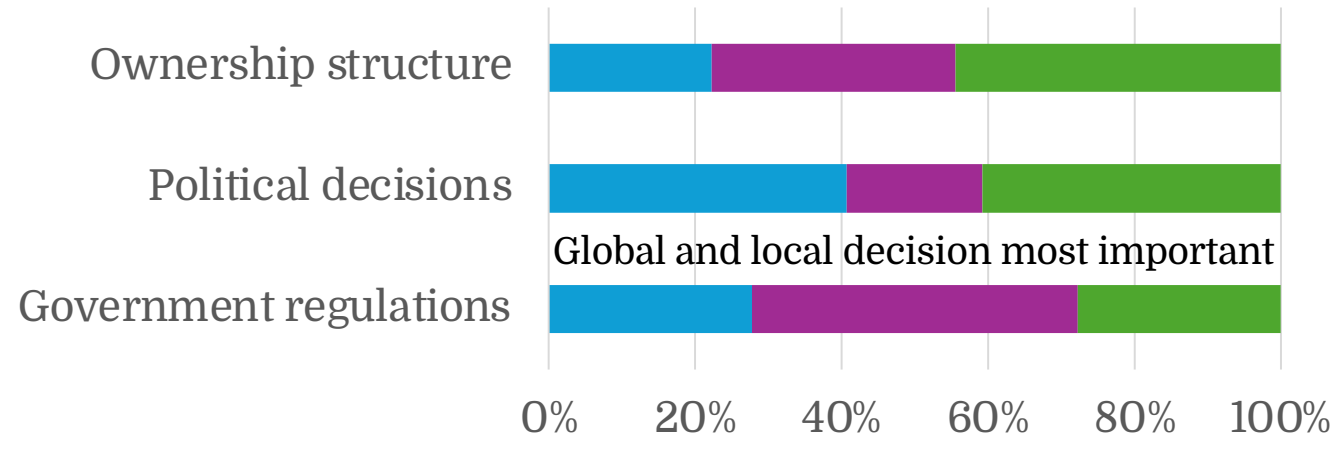
## WP 6:5 Catalonia – Economic and environmental factors are most frequently mentioned

Camilla Widmark\*, Sandra Krommes\*\*, Martin Brunsmeier\*\*, Julia Seise\*\*, Veronika Auer\*\*, Lina Girata Sastoque\*\*

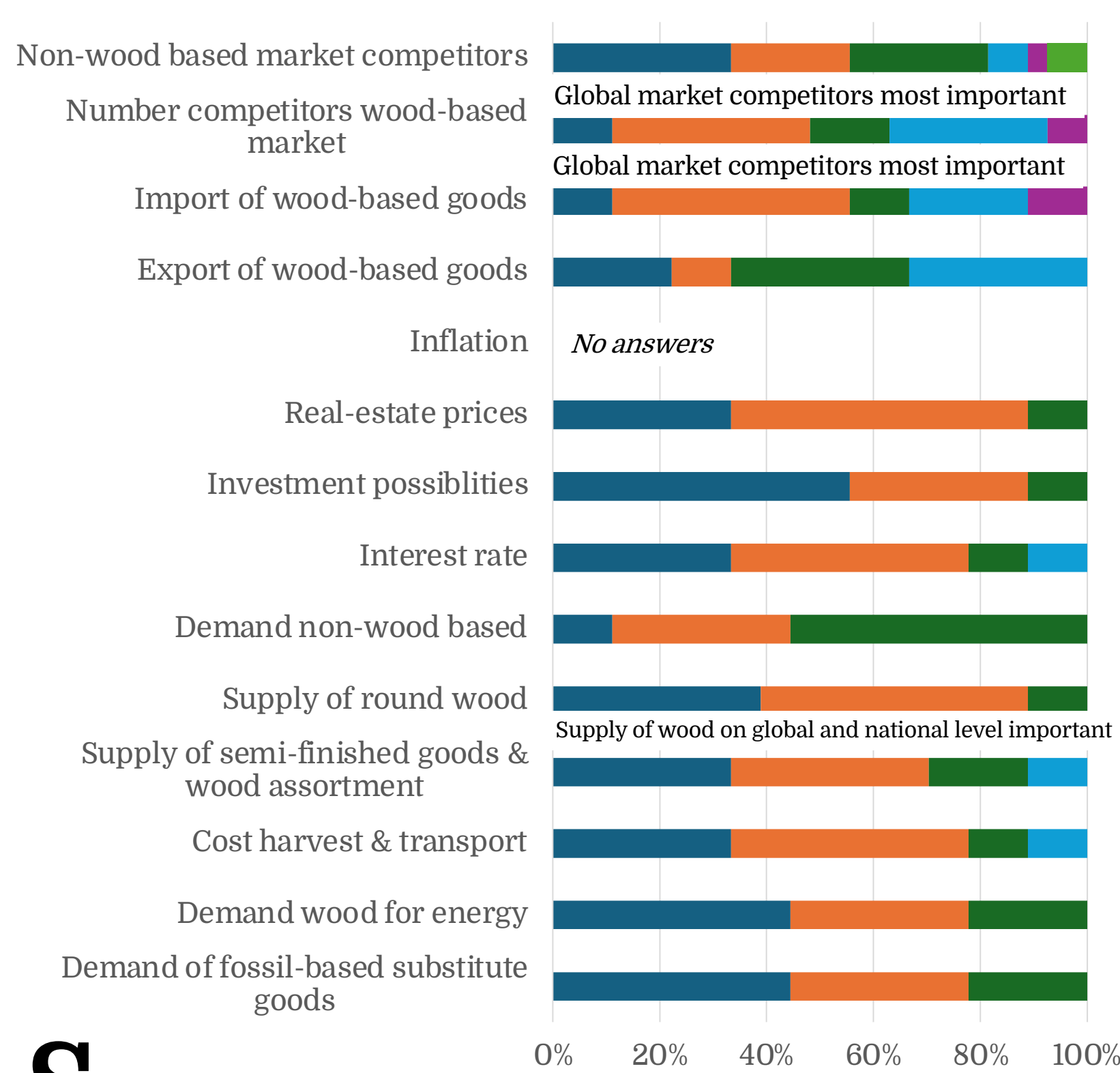
\* Department of Forest Economics, Swedish University of Agricultural Sciences, camilla.widmark@slu.se

\*\* Rosenheim Technical University of Applied Sciences

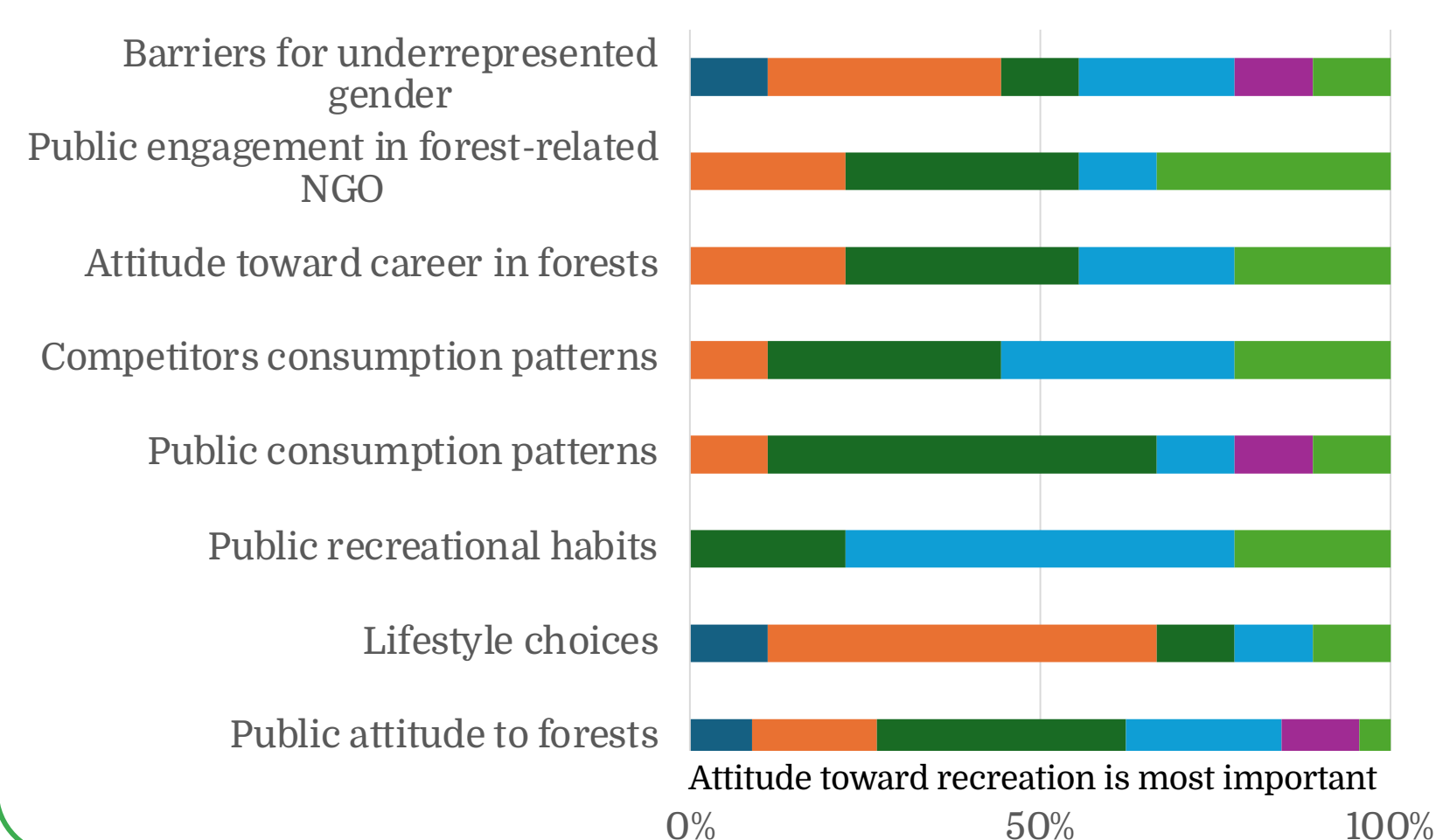
### Political sub-factors



### Economic sub-factors



### Social sub-factors



### PESTEL analysis builds upon discussions with stakeholders

Stakeholders identify, among the six PESTEL factors, the economic factor followed by the environmental factor as the most important factors that affect future development of forest and forest wood value chain. The legal factor was mostly mentioned as having no effect.

Breaking down the factors into sub-factors, the most influential factors are found among the economic factors, e.g., investment possibilities and demand for wood or fossil-based substitute goods.

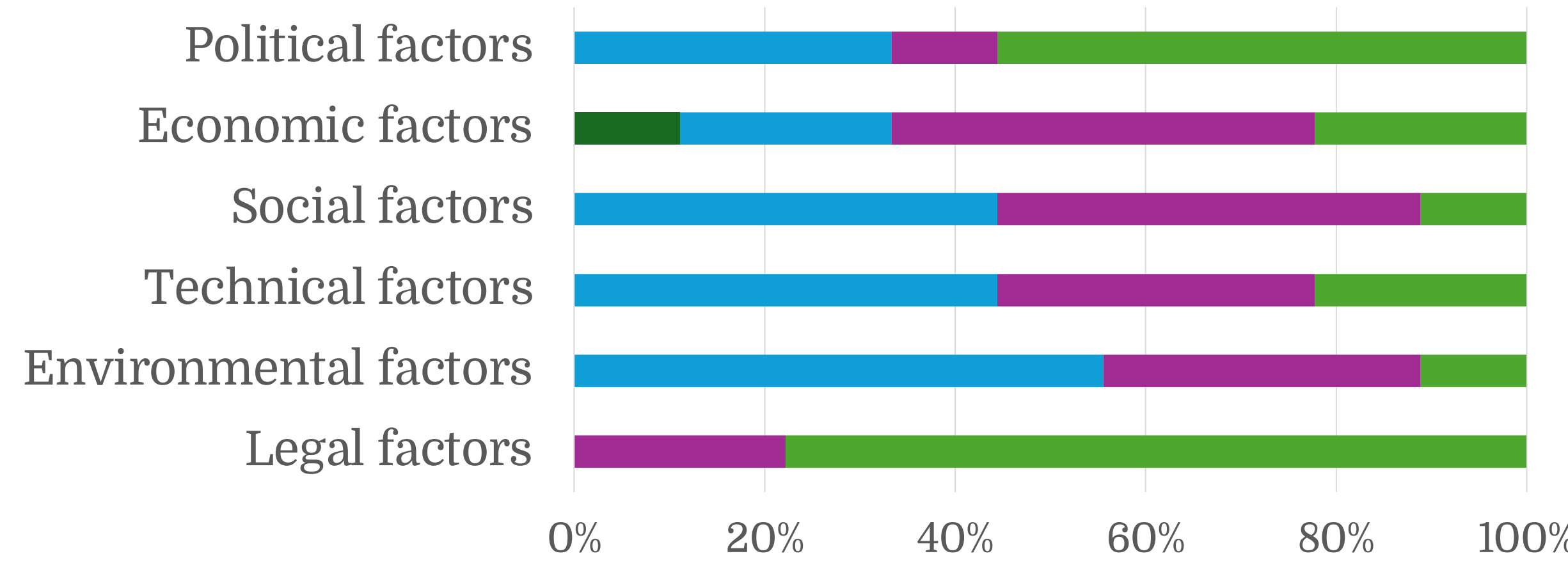
Among the environmental sub-factors are biodiversity protection as well as prevention of forest damages among the most important factors.

Technical sub-factors like investment possibilities in new technology and technical development are important.

Sanctions and fines together with regulation of biodiversity and recycled material use has severe effect on forest stakeholders.

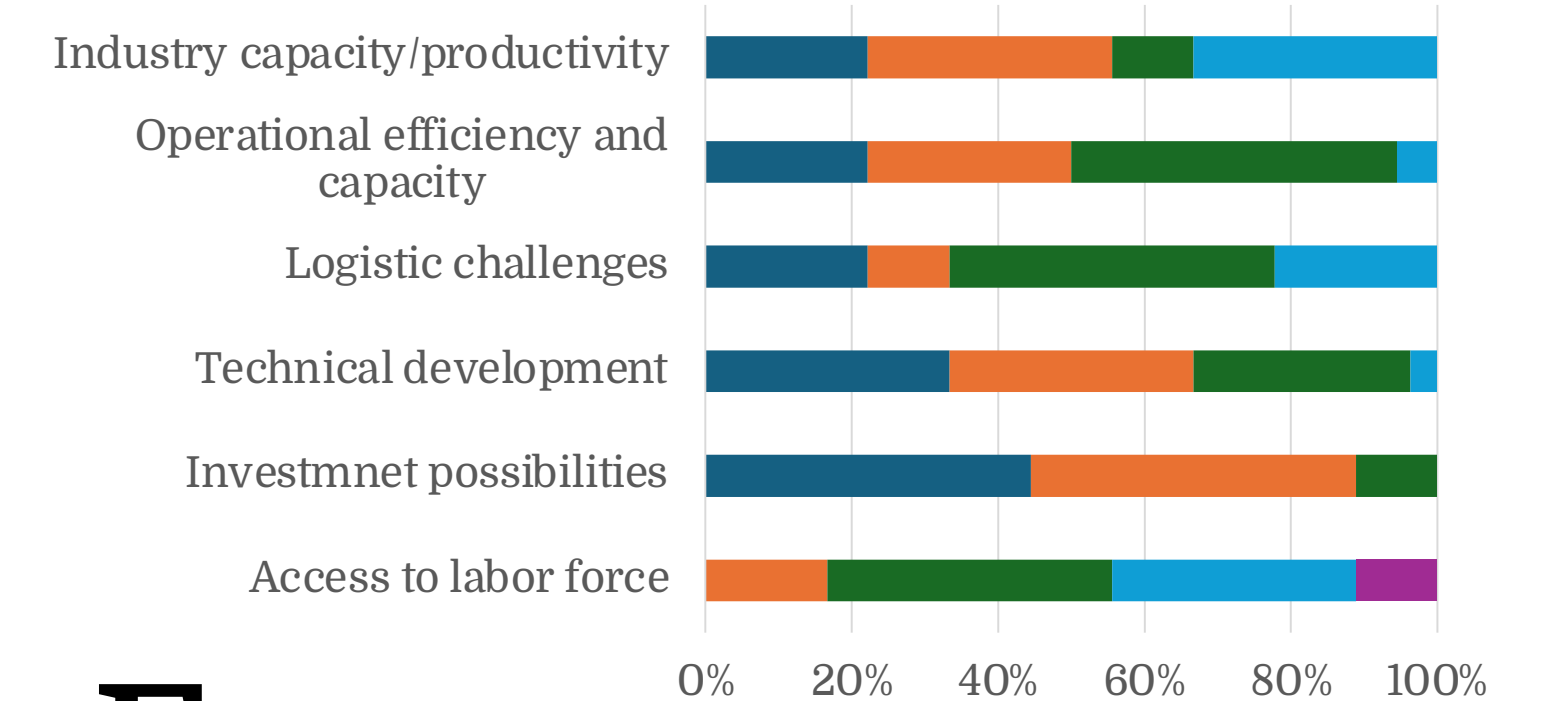
Among the least influential factors political sub-factors are mentioned as having no effect by most stakeholders together with social subfactor of NGO engagement.

### Factors affecting stakeholders in Catalonia

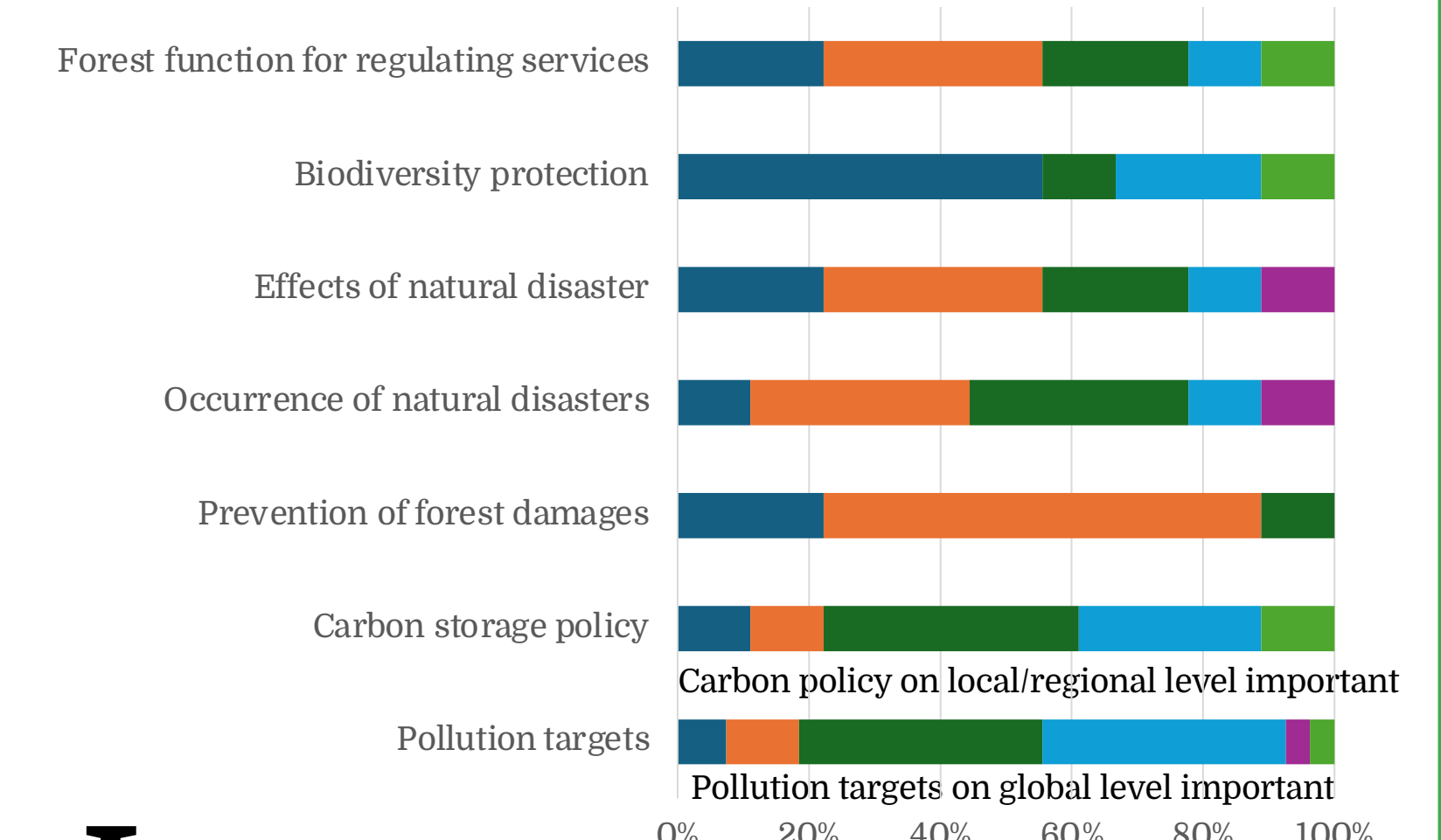


■ Severe effect ■ Major effect ■ Moderate effect ■ Minor effect ■ Insignificant effect ■ No effect

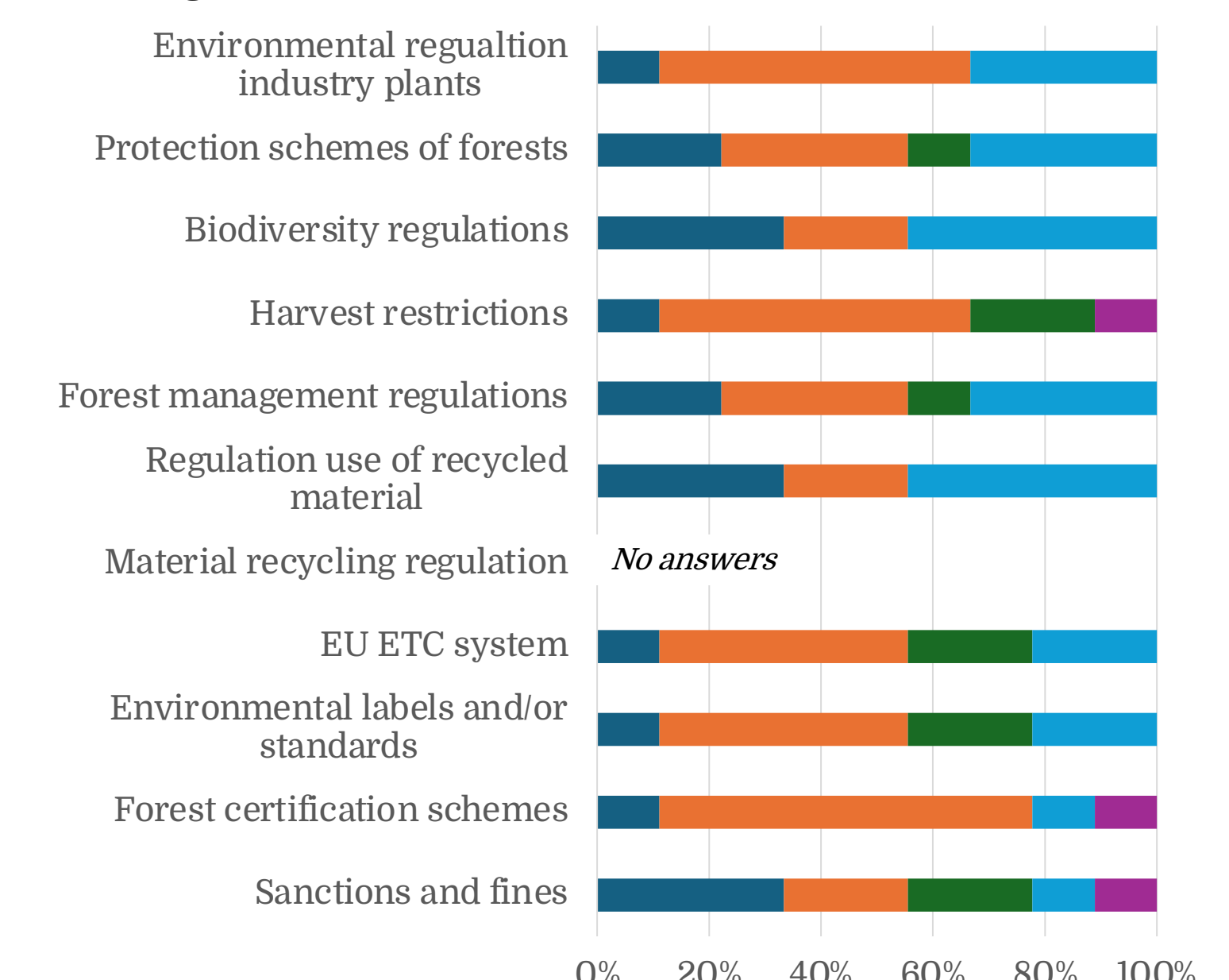
### Technical sub-factors



### Environmental sub-factors



### Legal sub-factors



### Scenarios in Catalonia

From the PESTEL four scenarios were developed describing possible future developments of the forest and forest wood value chain in Catalonia. A common view of the four storylines is that climate is a primary focus together with the development of biobased society and technical innovation along the wood value chain.

